

FOR
COLECOVISION[®]
& **ADAM**[™]
FAMILY COMPUTER SYSTEM

Guide No. 11077

CARTRIDGE INSTRUCTIONS

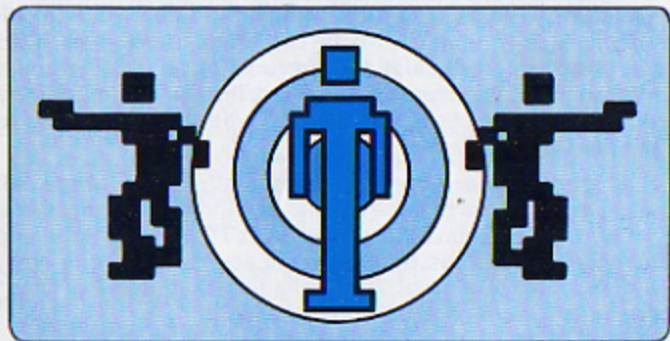
STERN'S[®]

FRENZY[™]

No. 2613

For use with ColecoVision[®] or the ADAM[™] Family Computer System!

- Instant Pause Control
- Select from Four Skill Levels
- For One or Two Players



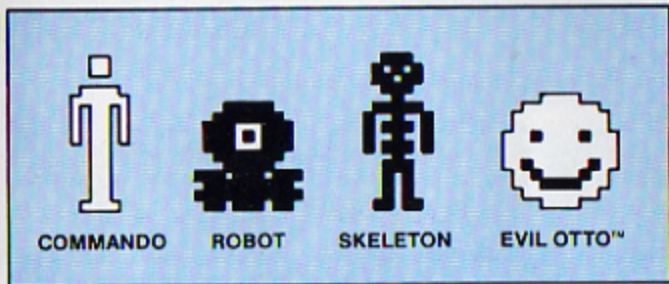
Use your ColecoVision[®] Controllers or your Super Action[™] Controllers

Lead your Commando against a battery of mechanical monsters in a bizarre, alien high-tech structure. Watch out for Evil Otto[™]!

Plays like the FRENZY[™] arcade game!

COLECO

GAME DESCRIPTION



Don't be fooled by Evil Otto's™ smile. It's deceptive. He, the robots and the skeletons are out to get your Commando!

Trapped in a bizarre, alien high-tech structure and surrounded by robots, your Commando moves from cell to cell as you face a band of deadly mechanical monsters. Odd marching skeletons clunk toward you. Robotic tanks trundle into position. Face your enemy and fire, or be doomed by their fatal touch! Eliminate all automatons and proceed to the next assembly.

Stay alert! Your enemies now fire deadly blasts. Some cell walls ricochet the blasts—both yours and your enemy's—so watch where you fire! Worst of all is Evil Otto™, the bouncing menace who passes through walls and destroys any creature on contact. It's a bizarre battle for survival as Evil Otto™ bounces toward you! Will you make it?

GETTING READY TO PLAY

ALWAYS MAKE SURE THE COLECOVISION® UNIT IS OFF BEFORE INSERTING OR REMOVING A CARTRIDGE.

One-Player Game

Use the Port 1 Controller.

Two-Player Game (Alternating Players)

Player 1 uses the Port 1 Controller. Player 2 uses the Port 2 Controller. Players take turns. Player 1 begins, and each turn lasts until the player's Commando is eliminated.

Choose Your Challenge.

Press the Reset Button and the Title Screen appears on your TV. Wait for the Game Option screen to appear. It contains a list of eight game options.

Skill 1 (Game Options 1 and 5) is the easiest, suitable for play by beginners.

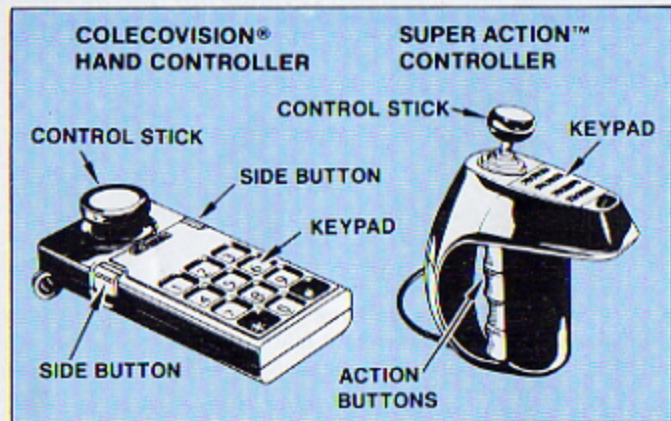
Skill 2 (Game Options 2 and 6) is harder. Your opponents are more dangerous:

Skill 3 (Game Options 3 and 7) plays much like a professional arcade machine.

Skill 4 (Game Options 4 and 8) poses the toughest challenge of all!

Select a game option by pressing the corresponding number button on your controller keypad.

USING YOUR CONTROLS



1. **Keypad:** Use Keypad Buttons to select number of players and skill level of game play.
2. **Control Stick:** Press the Control Stick in any of eight directions to move your Commando and to aim your weapon.
3. **Side Buttons** (ColecoVision® Controller): Press either Side Button to make your Commando fire. The Commando stops moving to fire.
4. **Action Buttons** (Super Action™ Controller): Press either the top (yellow) or second (orange) Action Button to make your Commando fire. The Commando stops moving to fire.

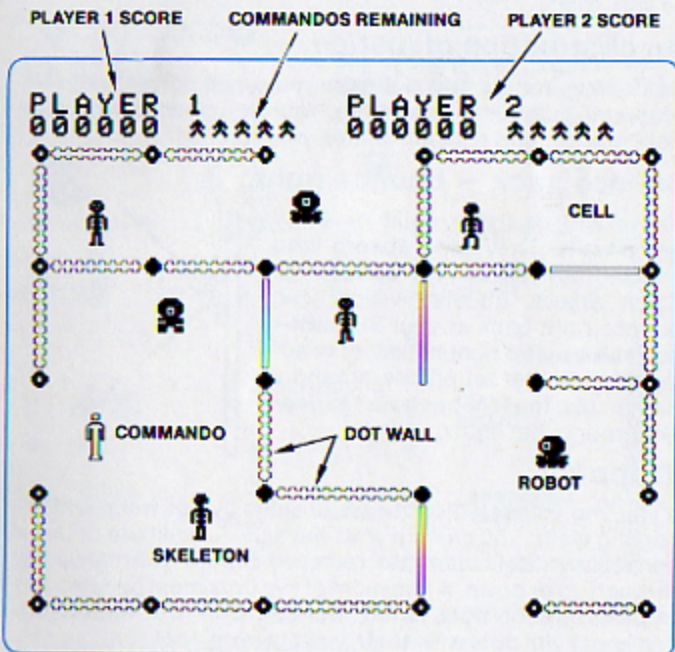
Firing Tip:

Position your Commando first. Then press and hold in a Side Button or Action Button. When you press the Control Stick toward your enemy, the Commando fires exactly on target!

HERE'S HOW TO PLAY

It's no Cell-ibration!

Here's what you're up against: a typical cell arrangement in a typical maze. No two mazes are exactly alike!

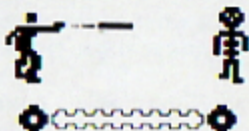


High-Tech Anxiety!

It doesn't matter how your Commando got here. What matters is that he must survive. First, there are those robots and skeletons to face. The minute they spot your Commando, they move in!

That fatal touch.

You're in luck! Your first opponents cannot fire at you. But watch out—don't let the mechanical and bony beasts get near your Commando. Their touch is deadly if you move into them. Keep your distance and take careful aim. But be careful — if you hit an enemy, its explosion is deadly to you, too!

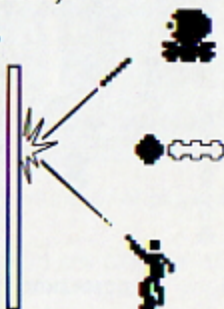


An obstruction of justice.

Sometimes robots and skeletons move behind dot walls. No problem—just take aim and fire. Your first shot eliminates a dot. Your second shot eliminates your enemy!

Bounce back — bounce right.

Be careful of those solid or dotted white walls. They don't absorb fired shots—from you or your opponents. They reflect bullets, which can bounce right back at you! But wait—you can use this ricochet effect to advantage. To get an enemy around a corner, use the reflecting wall to ricochet your bullet right on target!



Trapped!

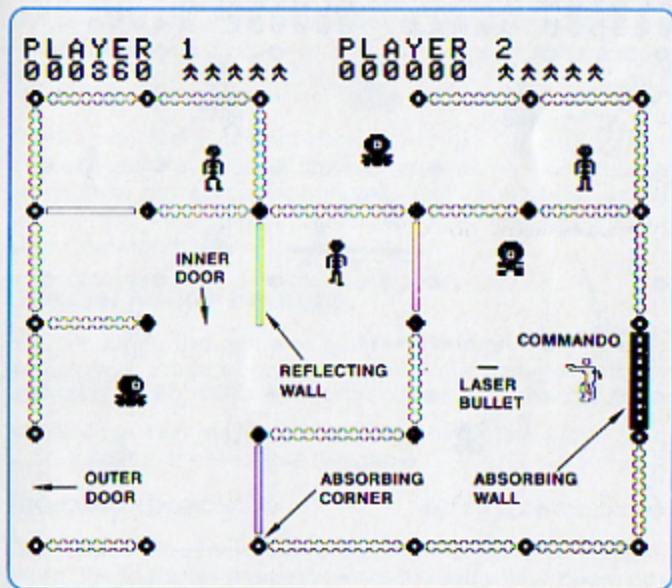
If you find yourself blocked on all sides by dot walls and reflecting walls, you can fire your way out. A minimum of three consecutive dots must be removed before you can pass through up or down. A minimum of five dots must be removed to pass through right or left. But caution—your opponents can knock out dots with **their** laser bullets, too!

This Way to the Great Egress.

If you can't take the heat and want to get out of the kitchen, look for an exit door in one of the outer walls. Then step through. You can also eliminate the dots in any outer wall to create an exit—in any direction.

Another maze.

You're not safe yet. Once you enter another cell arrangement, you face a whole new band of enemies. Notice the door through which you entered the new maze. It's now riveted shut and cannot be blasted—it absorbs shots. Nor can it be re-entered—you're trapped! Once you leave a maze behind, you can never return to take care of unfinished business.

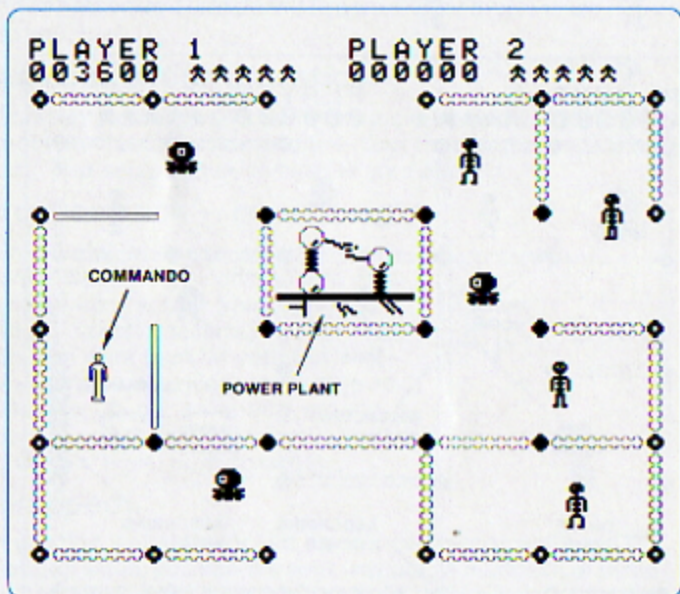


Our Feature Presentation.

Lucky you—some mazes contain a feature cell at their center. These featured mazes appear between nonfeatured mazes. How many nonfeatured mazes you have to pass through to get to the next featured maze depends on the skill level you're playing:

- Skill 1** = one nonfeatured maze
- Skill 2** = two nonfeatured mazes
- Skill 3** = three nonfeatured mazes
- Skill 4** = four nonfeatured mazes

Feature cells to watch for: Big Otto™, Power Plant, Computer and Robot Factory.

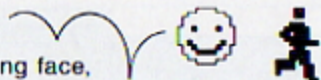


Freezing the Feature.

You can earn extra points by disabling and freezing the feature at the center of the maze. First eliminate a dot or two blocking the path of your bullet. If your next shot hits the feature, you disable its operation and earn extra points!

Stay alert. Some features offer a surprise when disabled by your bullets. Be on the watch—forewarned is forearmed.

Otto™-matic Danger!



Evil Otto™, the smiling, bouncing face, can enter the maze when you least expect him. He bounces toward your Commando, and nothing can stop him—not even walls or other aliens! Aim carefully and fire laser bullets. It takes three shots to crush Otto's™ smile and eliminate him. (In Skill 4 games, it takes four shots.) But surprise! Another Evil Otto™ takes his place and pursues you even faster! Better find a way out of the maze quickly.

No Exit.



There is no real exit from this alien trap. There is only an endless chain of mazes, an endless barrage of opponents, and an endless battle for survival. Final defeat comes only when you have lost all your Commandos.

Special Pause Feature

Press * during the game to pause. The screen blanks and music plays. Press * again to resume your game exactly as you left it.

NOTE: In a two-player game, only the active player can pause, then resume the game.

Starting Over

The game ends when all your Commandos have been eliminated. Press * after the game ends to replay your game option. Press # to return to the Game Option screen and choose another challenge.

Reset

The Reset Button on the console stops the game and returns you to the Title Screen. It can be used to start a new game at any time or in the event of game malfunction.

SCORING

<u>ACTION</u>	<u>POINTS</u>
Any Dot Eliminated	1
Robot Eliminated	50
Skeleton Eliminated	50
Bullet Contacts Evil Otto™	20*
Power Plant Disabled	100
Computer Disabled	100
Robot Factory Disabled	100

* except for first bullet in a Skill 4 game

Bonus Points

When each scene first appears, it contains a number of robots. If you eliminate the *same* number of robots during the course of the scene (whether or not more robots enter), you earn 10 times that number in Bonus Points. Example: Nine robots appear at the start of a scene, then three are added. If you eliminate any nine robots, you earn 90 Bonus Points.

Bonus Commandos

You receive five Commandos in Skill 1 games, and three Commandos in games played at all other skill levels. You earn a bonus Commando when your score reaches 1000, and an additional Commando for every 2000 points earned thereafter.

THE FUN OF DISCOVERY

This instruction guide provides the basic information you'll need to start playing FRENZY™, but it is only the beginning! You'll find that this cartridge contains special features that make FRENZY™ exciting every time you play. Experiment with different techniques—and enjoy the game!

90-DAY LIMITED WARRANTY

Coleco warrants to the original consumer purchaser in the United States of America that this video game cartridge will be free of defects in material or workmanship for 90 days from the date of purchase under normal in-house use.

Coleco's sole and exclusive liability for defects in material and workmanship shall be limited to repair or replacement at its authorized Coleco Service Station. This warranty does not obligate Coleco to bear the cost of transportation charges in connection with the repair or replacement of defective parts.

This warranty is invalid if the damage or defect is caused by accident, act of God, consumer abuse, unauthorized alteration or repair, vandalism, or misuse.

Any implied warranties arising out of the sale of the video game cartridges including the implied warranties of merchantability and fitness for a particular purpose are limited to the above 90 day period. Coleco shall in no event be liable for incidental, consequential, contingent or any other damages.

This warranty gives you specific legal rights, and you may have other rights which vary from State to State. Some states do not allow the exclusion or limitation of incidental or consequential damages or limitations on how long an implied warranty lasts, so the above limitations or exclusions may not apply to you.

SERVICE POLICY

Please read your Video Game Owner's Manual carefully before using the product. If your video game cartridge fails to operate properly, please refer to the trouble-shooting checklist in the Owner's Manual for your particular video system. If you cannot correct the malfunction after consulting the trouble-shooting checklist, please call Customer Service on Coleco's toll-free service hotline: 1-800-842-1225 nationwide. This service is in operation from 8:00 a.m. to 5:00 p.m. Eastern Standard Time, Monday through Friday.

If Customer Service advises you to return your video game cartridge, please return it postage prepaid and insured, with your name, address, proof of the date of purchase, and a brief description of the problem to the Service Station you have been directed to return it to by the toll-free service information. If your cartridge is found to be factory defective during the first 90 days, it will be repaired or replaced at no cost to you. If the cartridge is found to have been consumer damaged or abused and therefore not covered by the warranty, then you will be advised, in advance, of repair costs.

If your cartridge requires service after expiration of the 90 day Limited Warranty period, please call Coleco's toll-free service hotline for instructions on how to proceed: 1-800-842-1225 nationwide.



Stern's® Frenzy™ © 1982 Stern Electronics, Inc.
Stern®, Frenzy™, and Evil Otto™ are trademarks of Stern Electronics, Inc.

ColecoVision® is a registered trademark of Coleco Industries, Inc.

ADAM™ is a trademark of Coleco Industries, Inc.
©1983 Coleco Industries, Inc.

Package, Program and Audiovisual © 1983 Coleco Industries, Inc. Amsterdam, New York 12010